

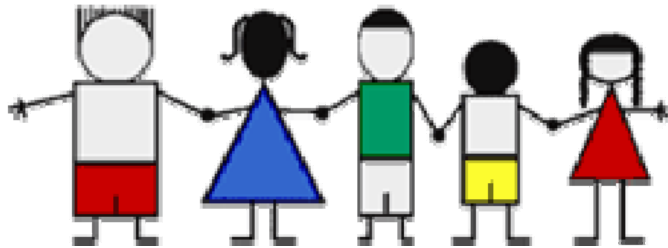


Administration for Children and Families

# National AFCARS Data Update

Policy to Practice Meeting  
October 13, 2011

*Presented by*  
**Valeria A. Fajardo**  
Children's Bureau Data Team

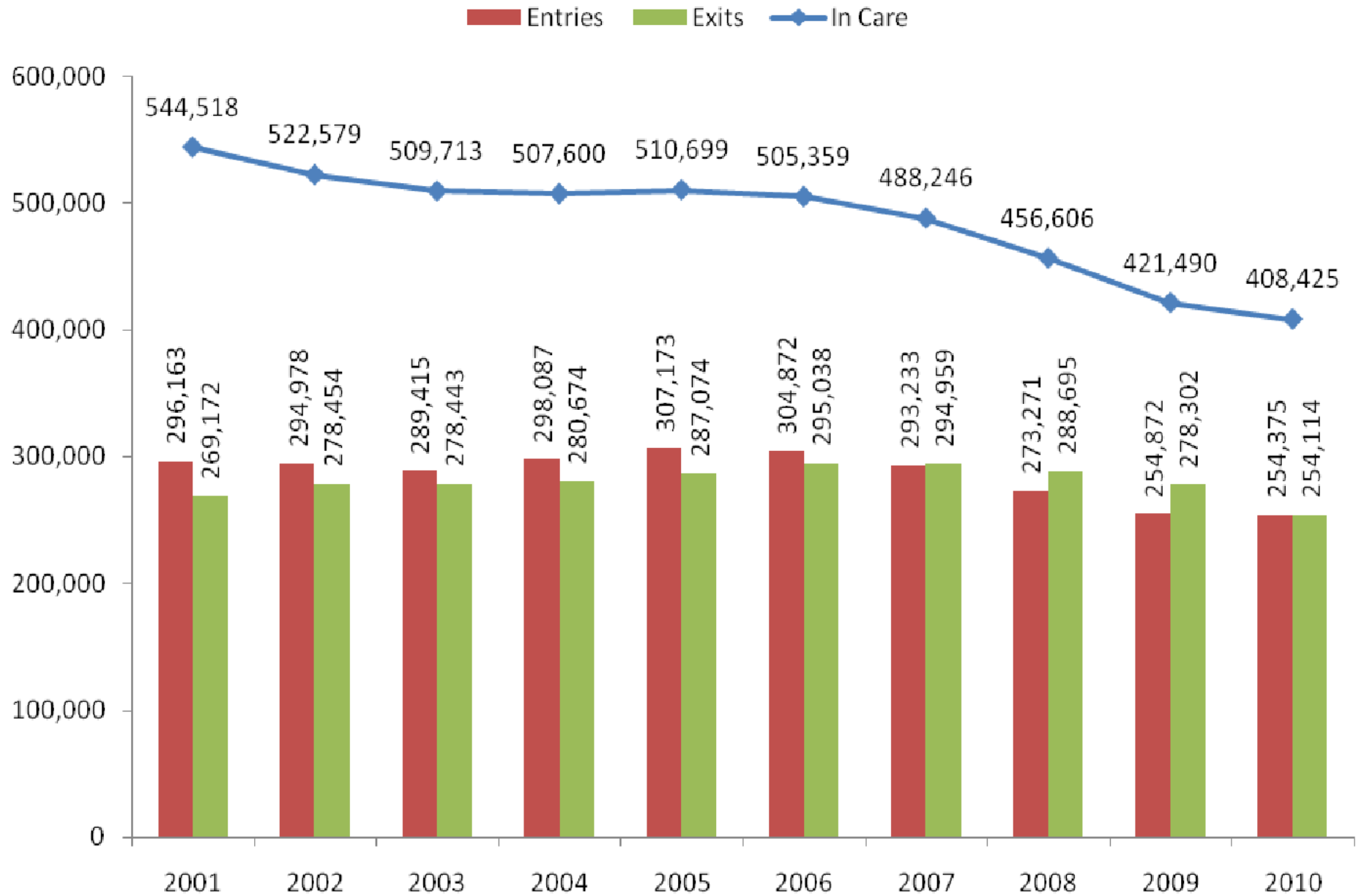


Safety • Permanency • Well-being

U.S. Department of Health and Human Services  
Administration for Children and Families  
Administration on Children, Youth and Families  
Children's Bureau



# Number of Entries, Exits, and In Care, 2001-2010

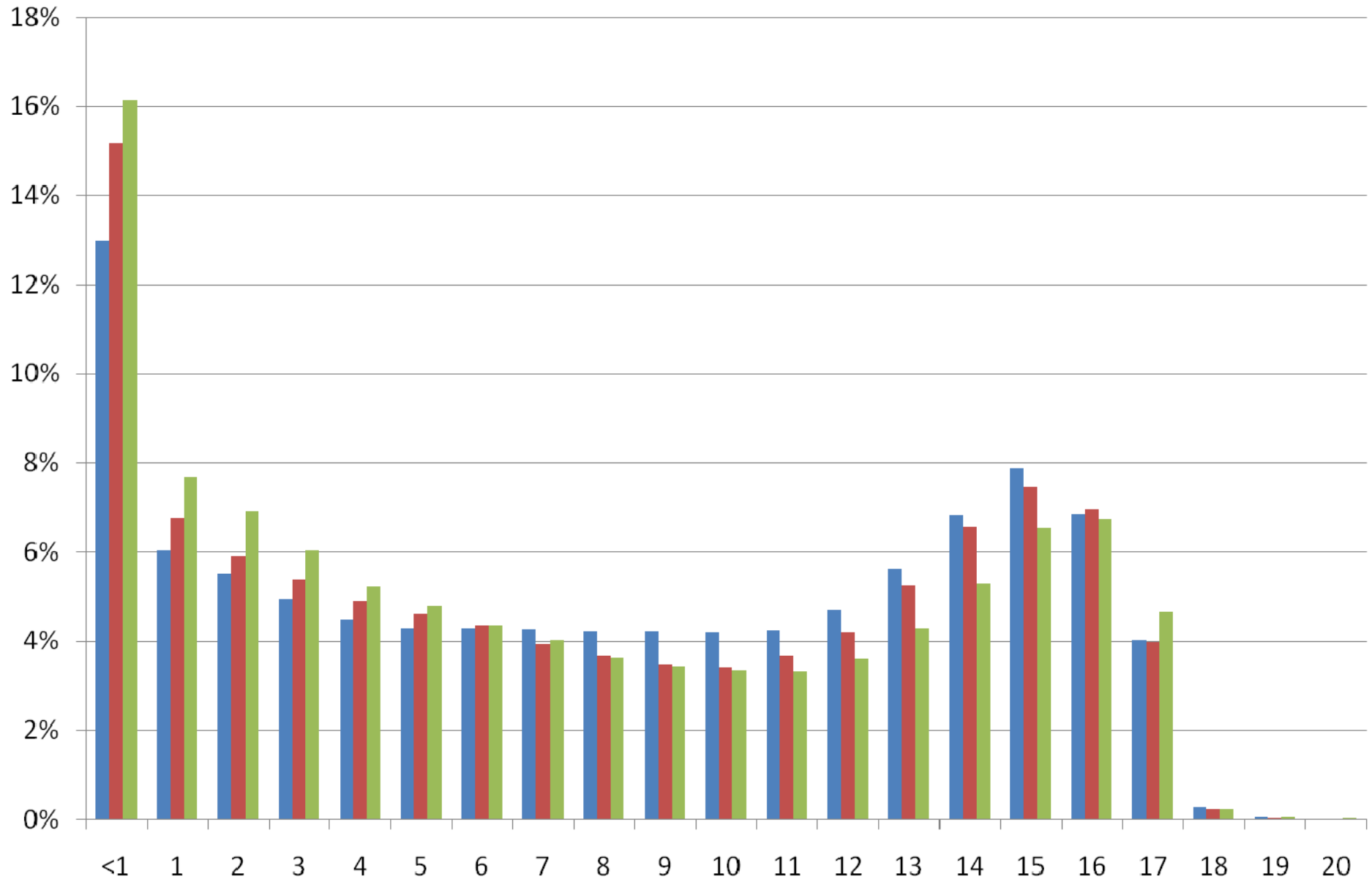


# Entries into Foster Care

- Changes over time in:
  - Age at removal
  - Circumstances Associated with Removal
  - Race/Ethnicity

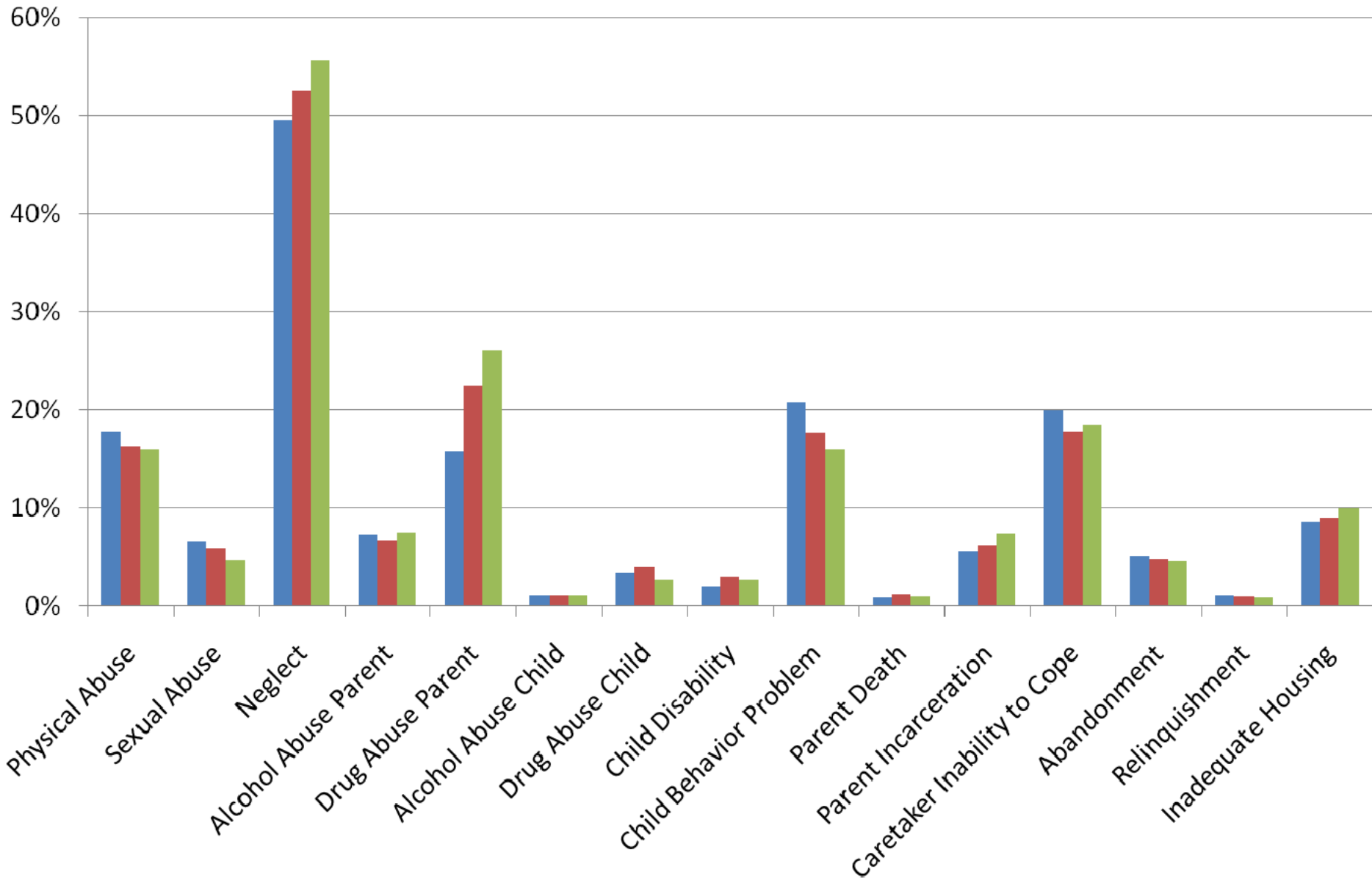
# Entries by Age

2001 2005 2010

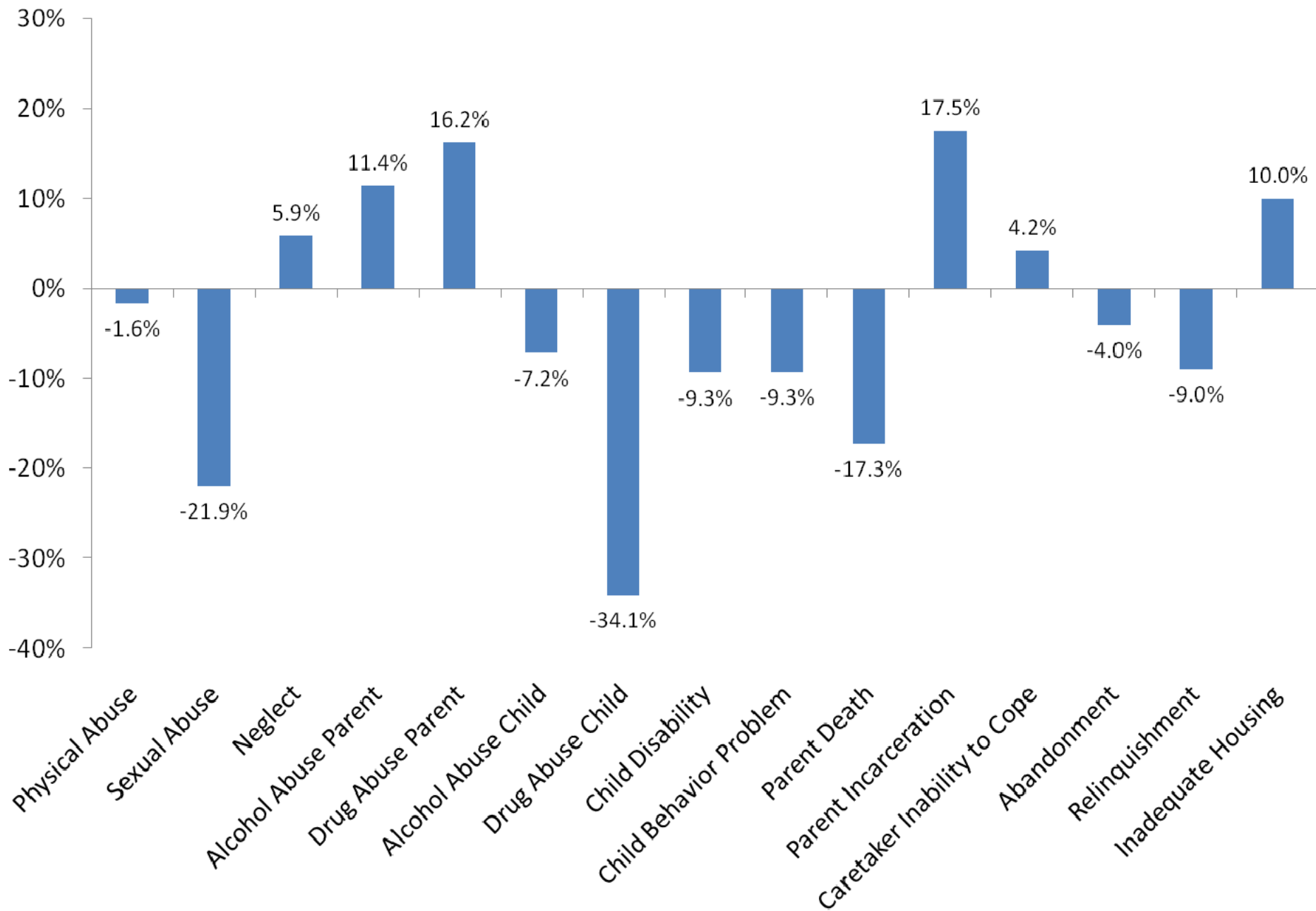


# Circumstances Associated with Removal

2001 2005 2010

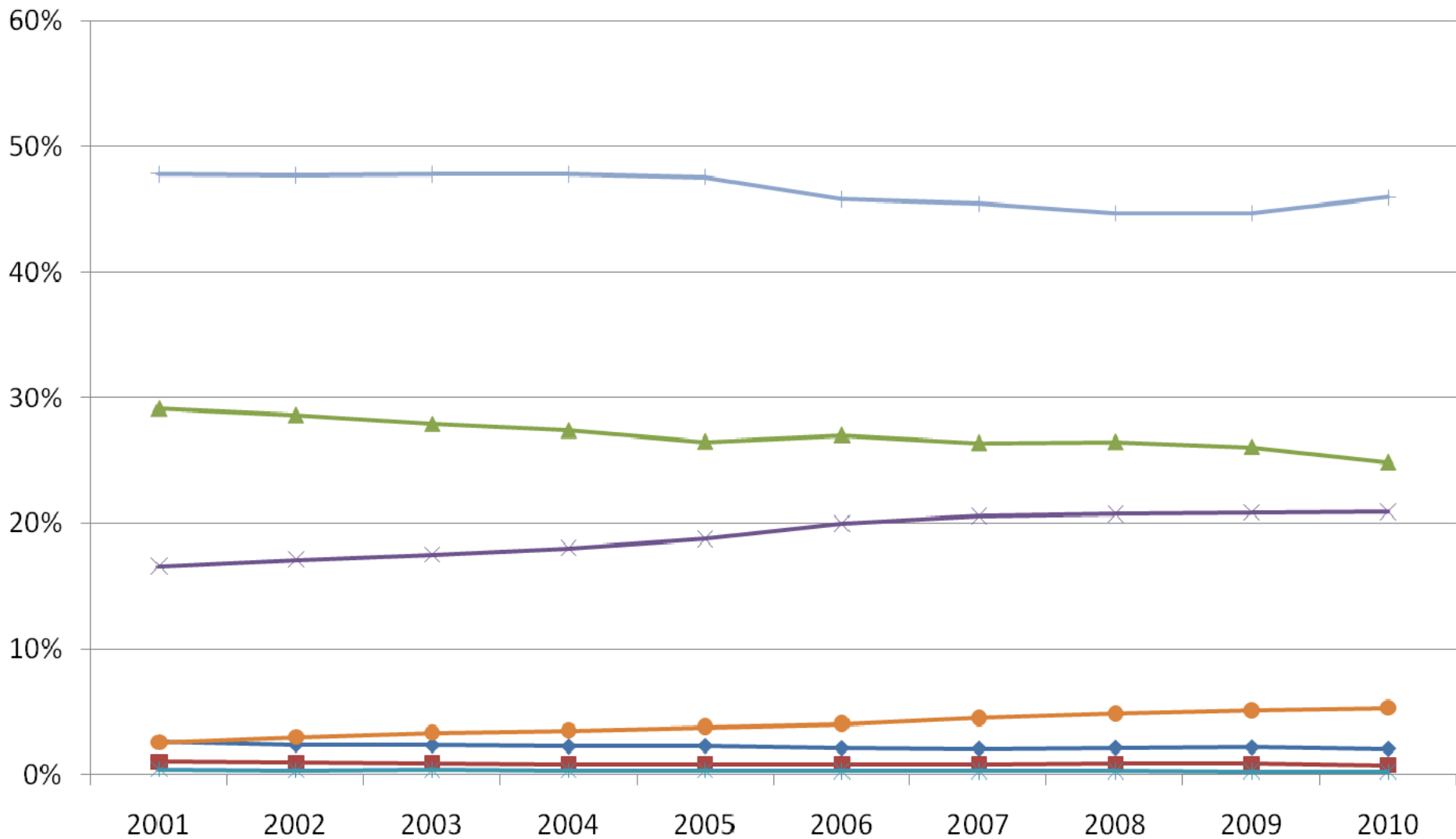


## Reasons for Removal, % Change, 2005 to 2010



# Percent of Children Entering by Race/Ethnicity, by Fiscal Year

- American Indian/Alaskan Native-Non Hispanic
- Black or African American-Non Hispanic
- Native Hawaiian/Other Pacific Islander-Non Hispanic
- White-Non Hispanic
- Asian-Non Hispanic
- Hispanic
- Two or More-Non Hispanic

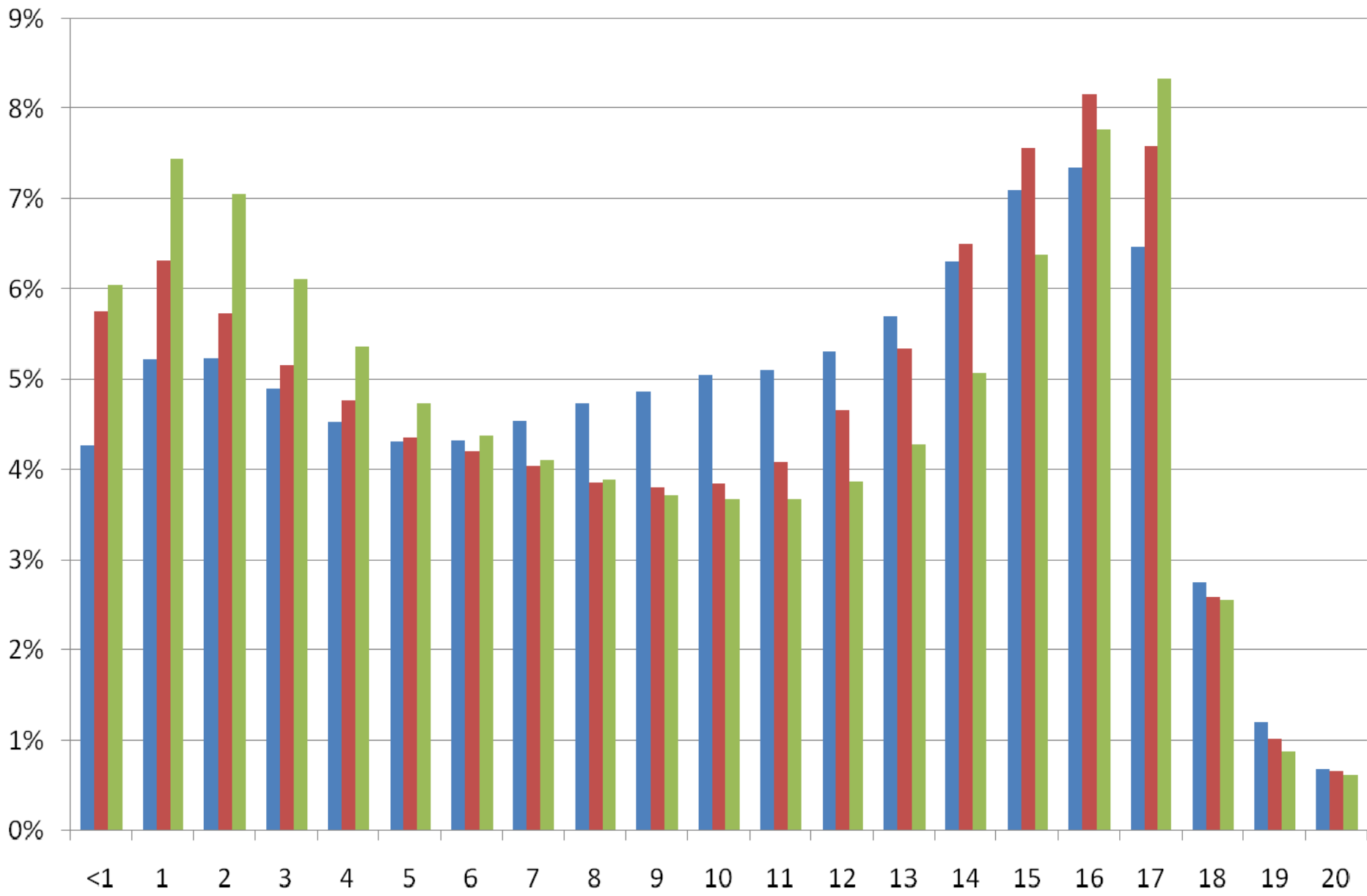


# Children In Foster Care

- Changes over time in:
  - Age
  - Length of Stay in Foster Care
  - Children Waiting to be Adopted

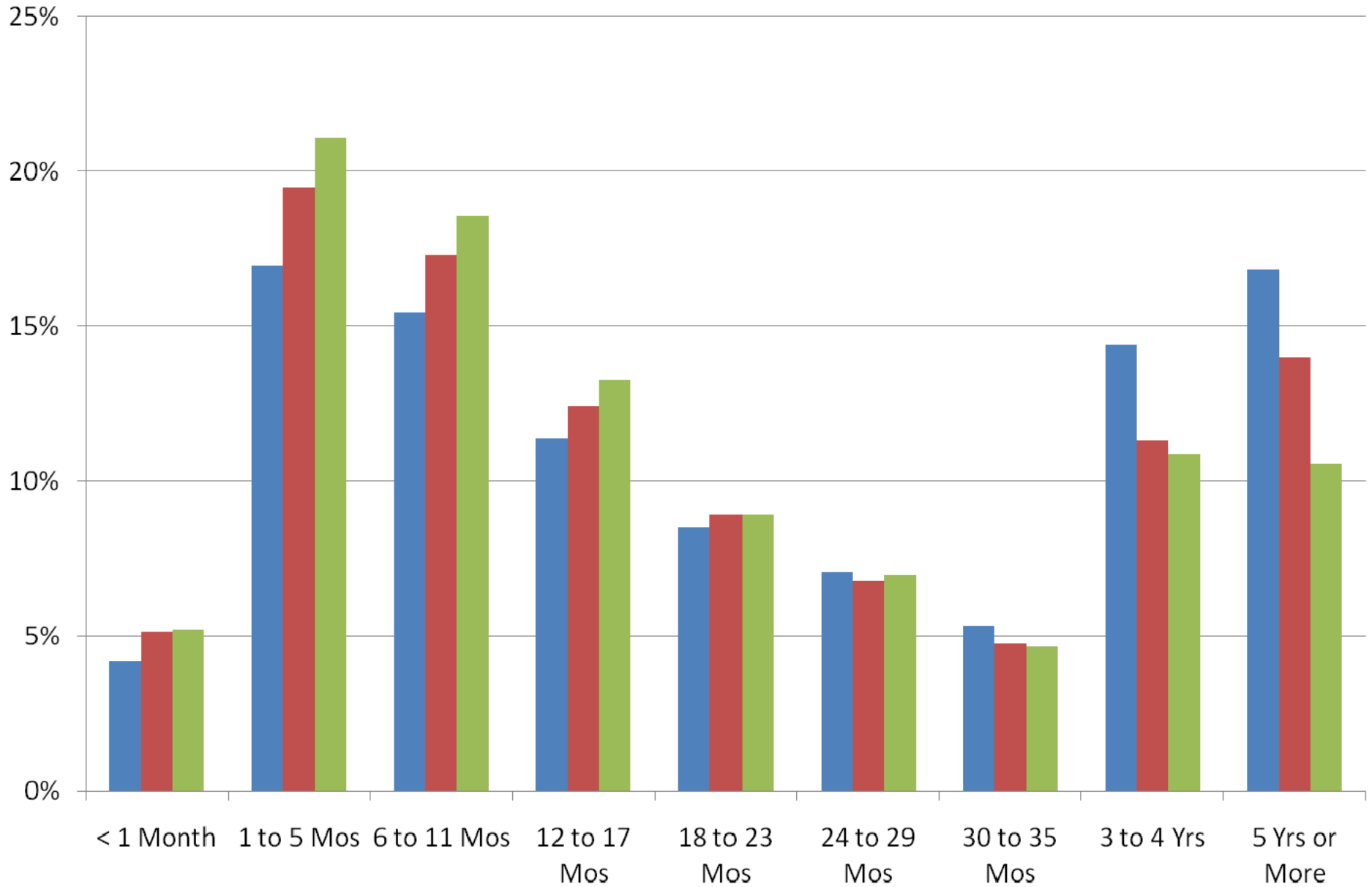
# Ages of Children In Care

2001 2005 2010



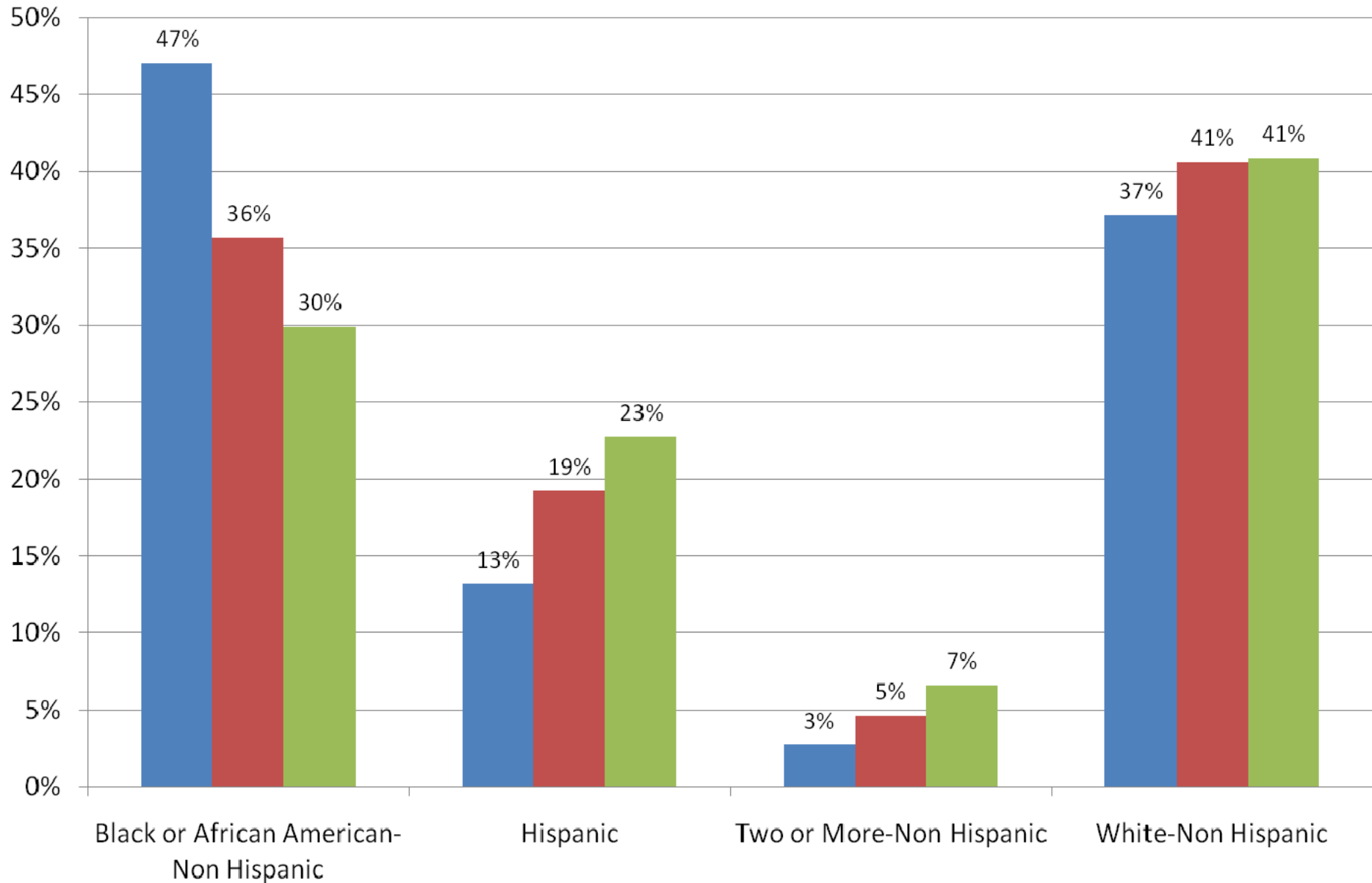
# Lengths of Stay for Children In Care

2001 2005 2010



# Children Waiting to be Adopted by Race/Ethnicity

■ 2001 ■ 2005 ■ 2010

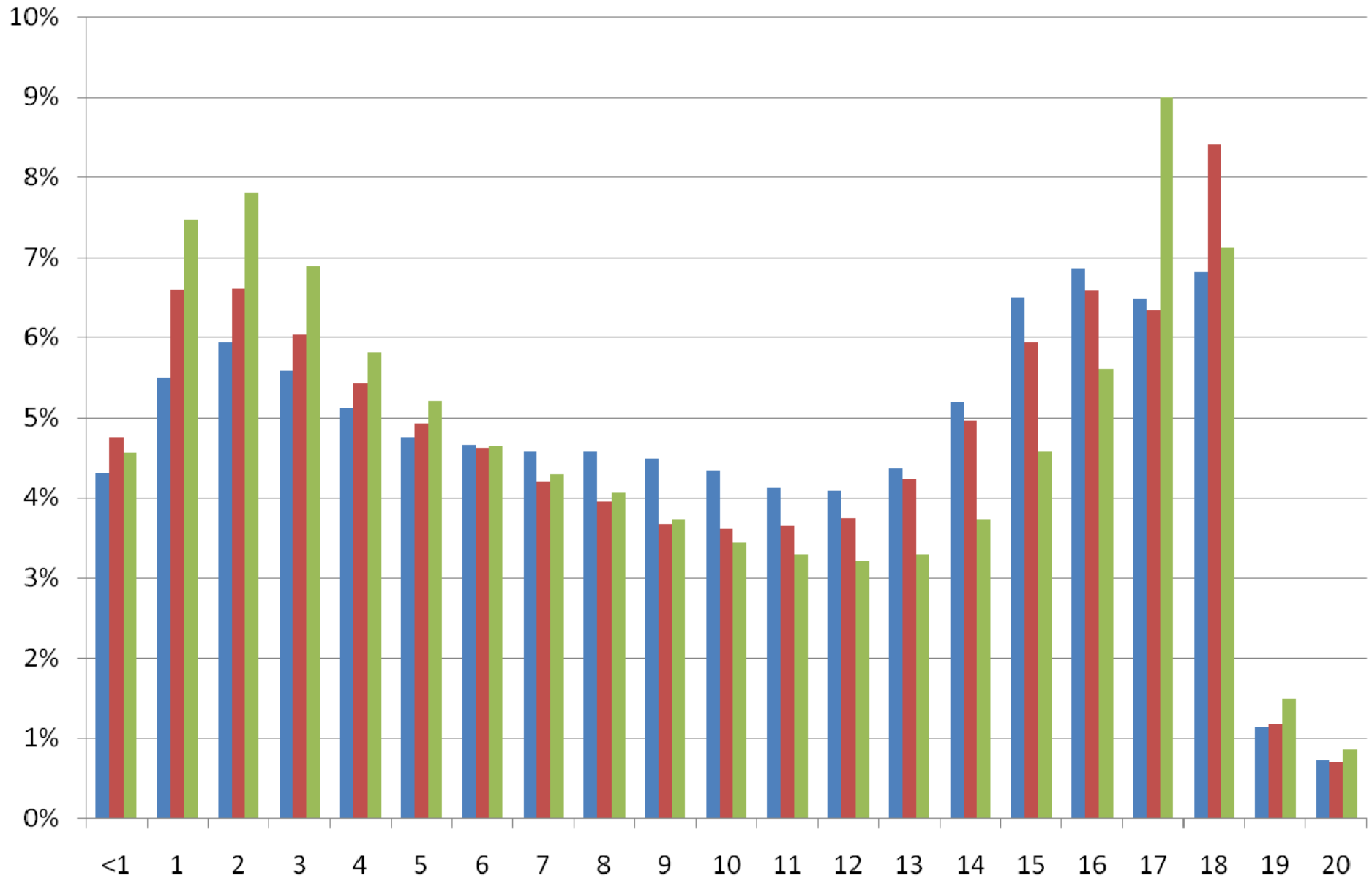


# Exits From Foster Care

- Changes over time in:
  - Age at Exit
  - Numbers of Adoptions by Age
  - Percent Discharged to Permanency by Age
  - Lengths of Stay by Exit Type

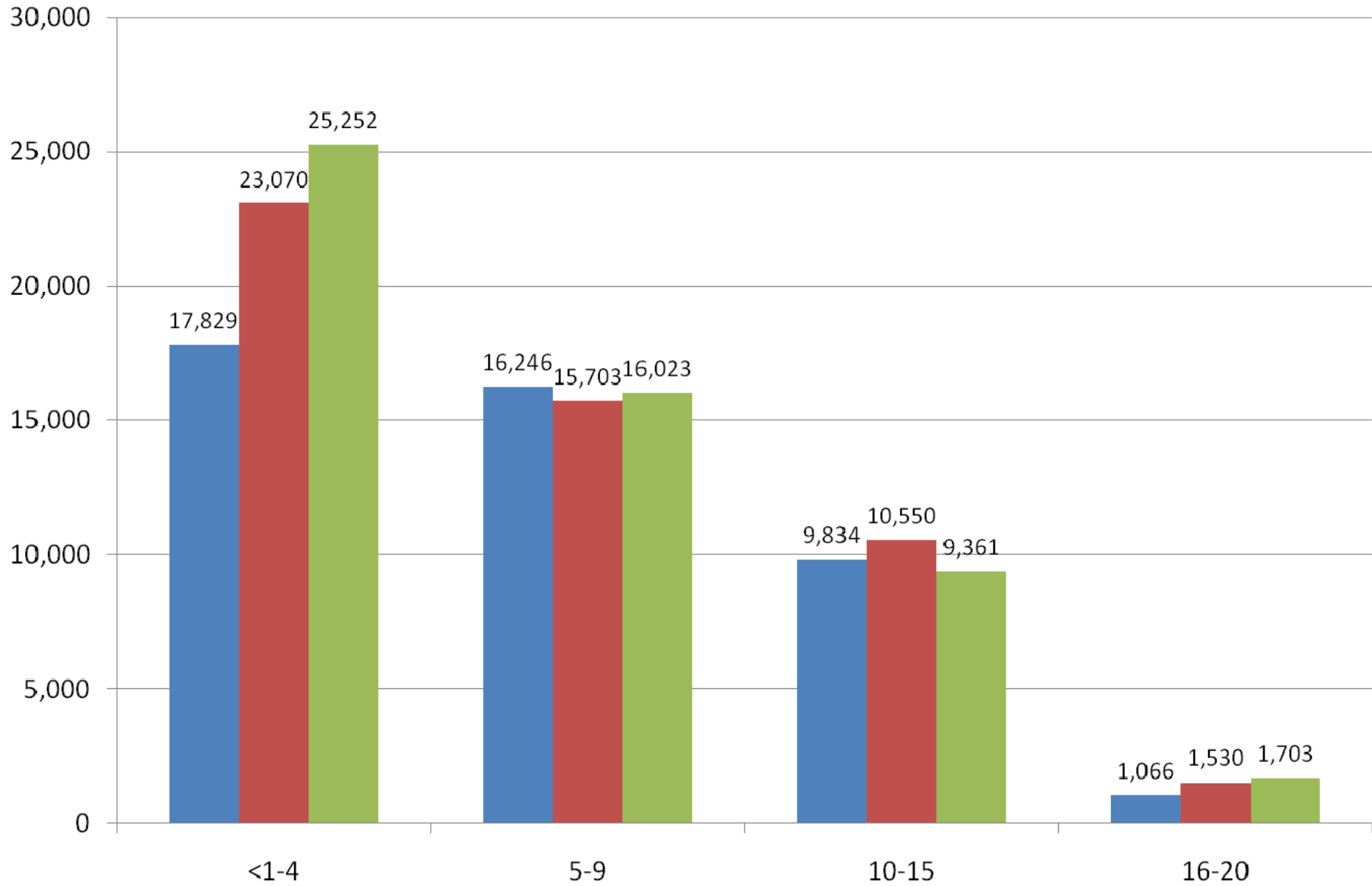
# Exits by Age

2001 2005 2010



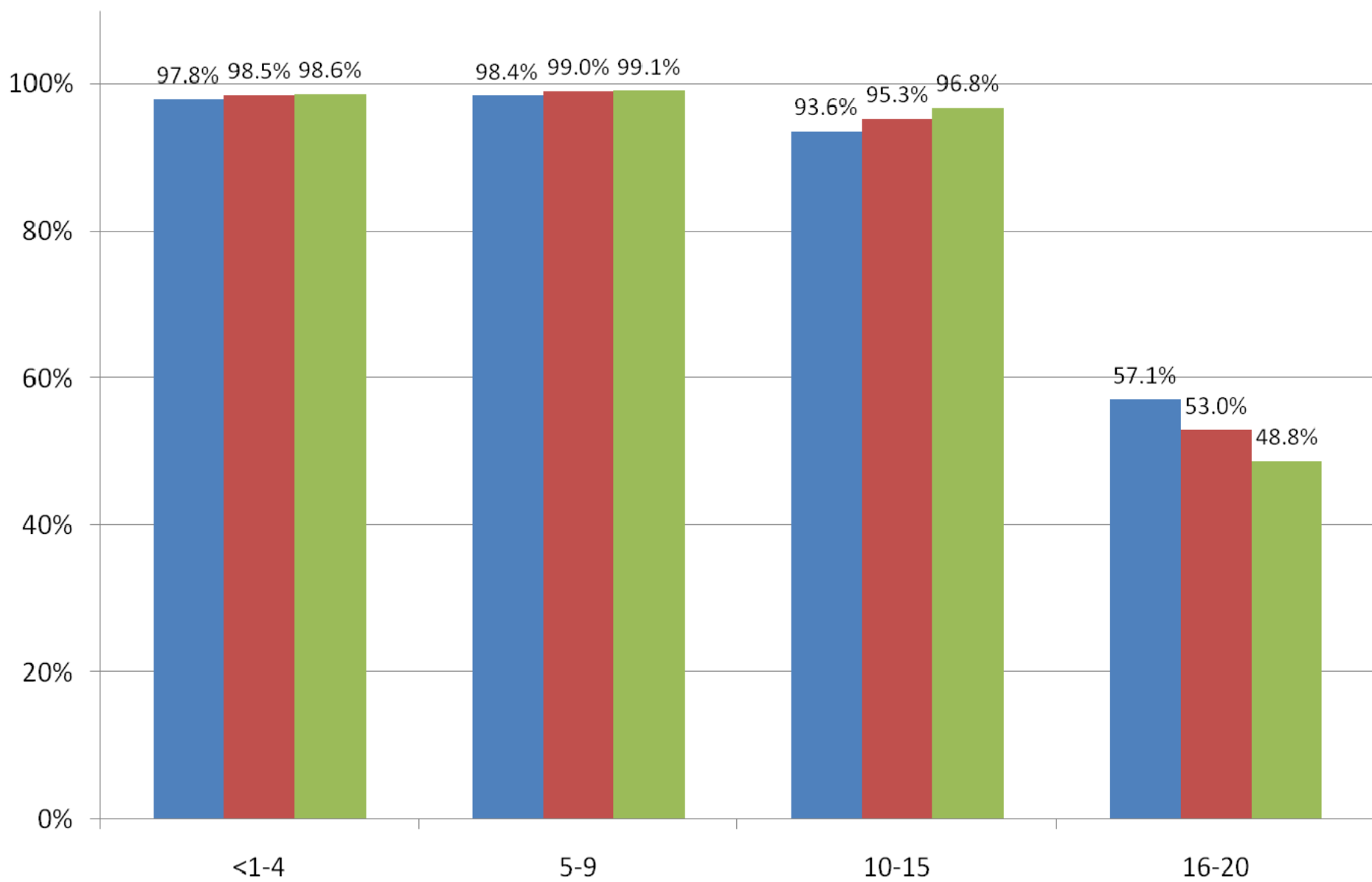
# Numbers of Adoptions by Age

2001 2005 2010



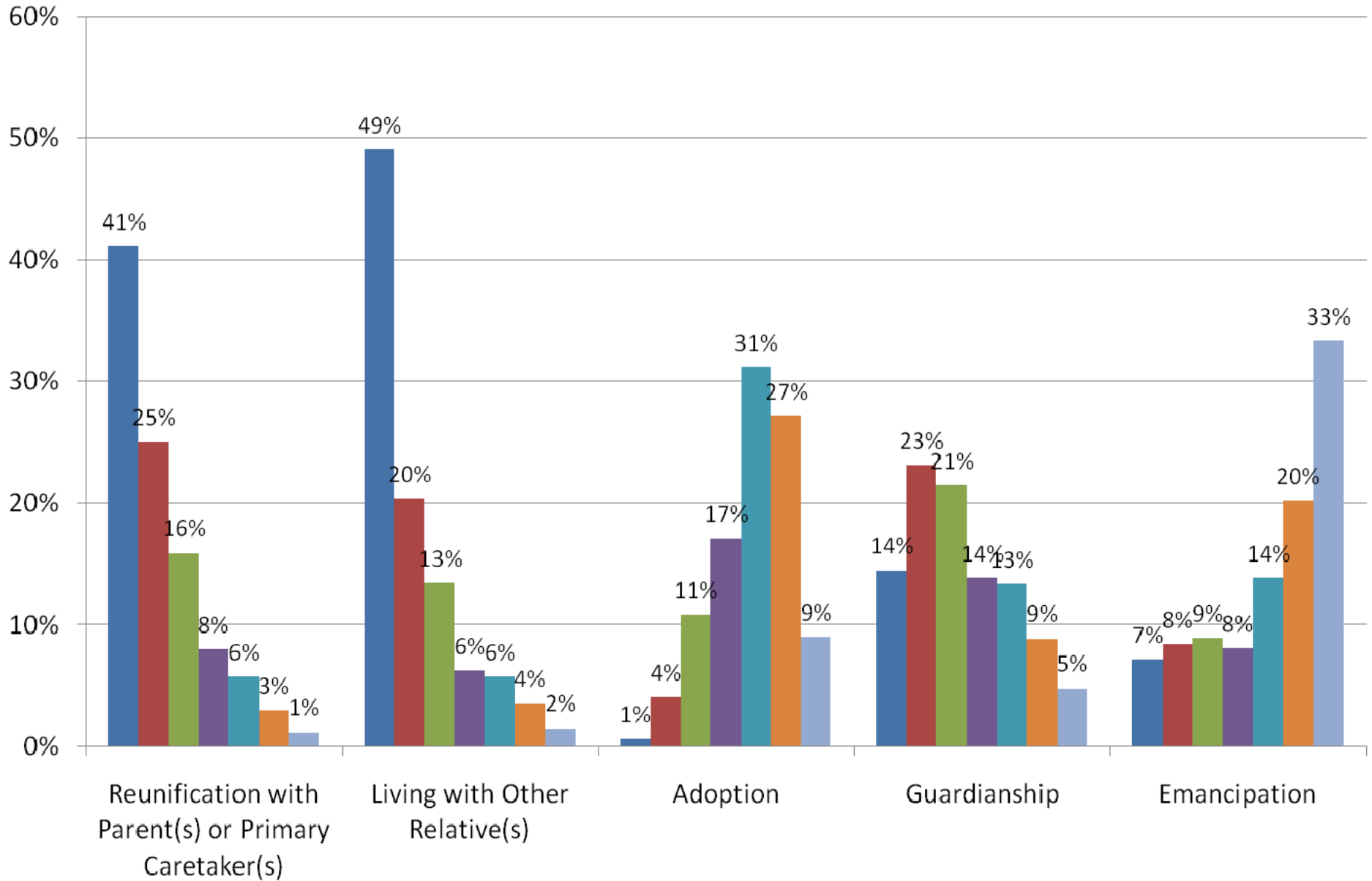
# Percent of Children Exiting to Permanency by Age

2001 2005 2010



# Lengths of Stay in Care by Exit Type for FY 2010

<6 Months   6 to 11 Mos   12 to 17 Mos   18 to 23 Mos   24-35 Mos   3 to 4 Yrs   5 Yrs or More



# Summary

- In Care population declined by 25% over the last decade, from 545,000 to about 408,000 in FY2010.
- Greater percentages of the children entering care are very young (1-4) or older teens (17) than in the past
- Reasons children come into care are changing as well (greater % due to neglect, drug abuse of parents or parental incarceration than in the past)

# Summary

- Children are in care for shorter periods of time than in the past
- % of children waiting to be adopted who are African-American are decreasing, while the percentages who are Hispanic are increasing
- % of older youth exiting to permanency has decreased
- About 1/3 of the youth exiting to emancipation were in care 5 years or longer

# Notes

- Adoption and Foster Care Analysis and Reporting System (AFCARS) data are reported from all 52 States and territories (including the District of Columbia and Puerto Rico) on a bi-annual basis.
- AFCARS data in this presentation are current as of June 2011. States frequently resubmit data, so they are subject to change.
- More information is available on the Children's Bureau's website at [http://www.acf.hhs.gov/programs/cb/stats\\_research/index.htm#afcars](http://www.acf.hhs.gov/programs/cb/stats_research/index.htm#afcars)

**Please consult with the Children's Bureau Data Team before quoting.**

Contact:

valeria.fajardo@acf.hhs.gov

(202) 205-7961